

**The Romanian Association for Security Tehnique
National Conference**

Second Edition

***The Role of Technology and Security Services in
Protecting People and Values***

**Crowne Plaza Hotel
Bucharest, June 2nd 2010**



European Quality Mark EQM - CERTALARM

ARTS National Conference 2010

Bukarest, 2. June 2010

Dirk Gesenhues

Euralarm General Secretary

- Brief look into the history**
- Principles of CERTALARM**
- Status of Certalarm**

- Brief look into the history**
- Principles of CERTALARM
- Status of Certalarm

- ❑ **2001: European companies founded the “Industry Meeting”**
 - “One Stop Testing and One Stop Certification” in the European Fire Safety and Security market
 - European Standards for Security products and systems
 - Platform to lobby and establish OTC in Europe

- ❑ **2003: The European Industry joint EURALARM as company members**
 - Negotiation with the established national certifiers and approval bodies i.e. LPCB, CNPP, AFNOR, VdS, ANPI etc. to achieve an European Quality Mark – EQM

- ❑ **2007: Start of the EQM project**
 - Financial support by the Industry and Euralarm members associations individually and Euralarm

- ❑ **2009: Foundation of CERTALARM AISBL**
 - Non Profit association based on the Belgium law
 - Established with an office in Brussels
 - Stakeholders: Insurers, test and certification bodies, Industry

- Brief look into the history
- Principles of CERTALARM**
- Status of Certalarm

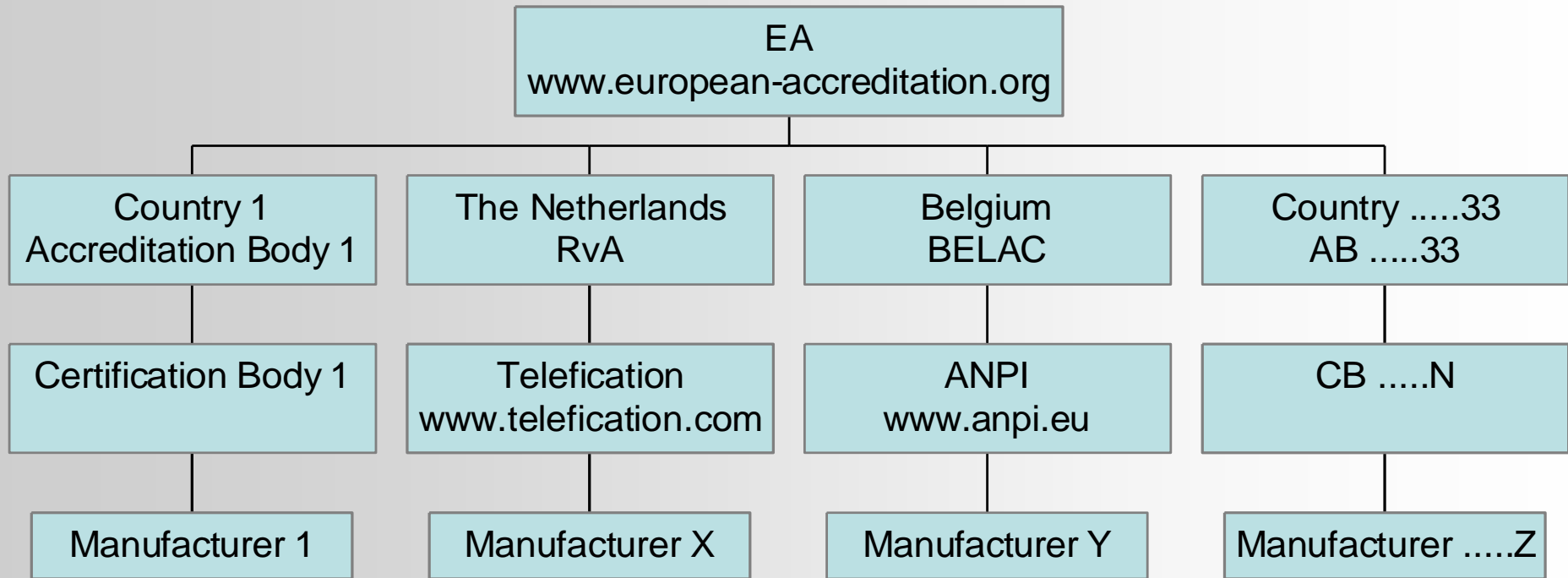
One Test, One Certificate,
One Quality Mark, One Inspection
for the whole of Europe

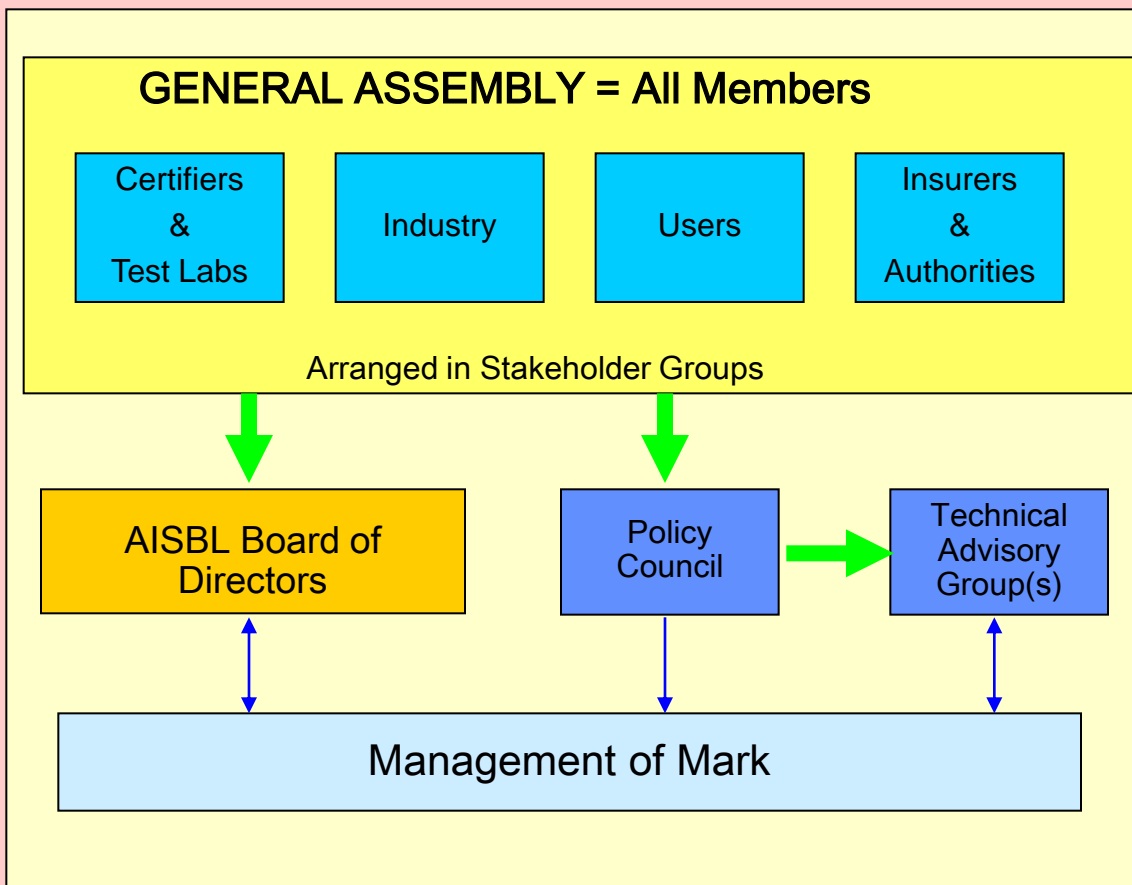
- ❑ Based on:
 - Endorsement
 - Participation
 - Outsourcing
 - EN standards
 - Quality
 - Competition

- ❑ The Certification Committee of the European Co-operation for Accreditation (EA) has considered the **CERTALARM** Scheme as being suitable to be covered as a Sector Scheme by the EA MLA (Multilateral Agreement).

EA: EA, [European co-operation for Accreditation](#), is a non profit association which was set up in November 1997 and registered as an association in the Netherlands in June 2000. EA is the European network of nationally recognised accreditation bodies located in the European geographical area.

MLA: The MLA is an agreement signed between the EA accreditation body members to recognise the equivalence, reliability and therefore acceptance of accredited certifications, inspections, calibration certificates and test reports across Europe.





MARK:



AISBL:

- ownership of mark
- overall strategy / budget
- acceptance criteria
- identify standards, products, services

Management of Mark:

- licensing of mark
- monitoring of CABs
- product/service listing
- market surveillance

- ❑ Testing, Certification and Inspection are outsourced. Each organisation properly accredited by a signatory to the EA MLA can become a Partner after fulfilling the requirements of a pre-acceptance audit.

- ❑ Contracts will be signed
 - with CB's -> Contracted Certification Body (CCB).

- ❑ Memorandum of Recognition will be signed.
 - with Test Laboratory -> Recognised Test Laboratory (RTL)
 - with Inspection Body -> Recognised Inspection Body (RIB)

CERTALARM AISBL

Management of Mark

PARTNERS

Contracted
Certifiers

Recognised
Inspection
Bodies

Recognised
Test
Laboratories

Inspection / Testing
& Certification
under EA supervision

Certifiers, Test Labs and
Inspection Bodies may also be
stakeholder members

Assured consistency of operation

- EN 54-series (Fire)
- EN 14604 (Smoke Alarm Devices)
- EN 50130-series (Environmental)
- EN 50131-series (Intruder and Hold-Up Alarms)
- EN 50132-series (CCTV)
- EN 50133-series (Access Control)
- EN 50134-series (Social Alarm)
- EN 50136-series (Alarm Transmission)

ALLMOST COMPLETE

- RTL's, RIB's and CCB's must be accredited by one of the AB's being signatory to the EA MLA.
- In case these accreditations do not guarantee the quality level as wanted by **CERTALARM** and/or individual AB's have policies different from those of the EA, **CERTALARM** will actively promote the development and/or adaptations of EA policies according to the standard procedures of the EA (as being a Recognised Stakeholder of the EA).
- In the mean time **CERTALARM** will decide for a work around.
(like a Comparison Program, a Test Report acceptance policy, a Qualification Program, a Waiver, etc.).

- **Full competition between:**
 - Recognised Test Laboratories (RTL);
 - Recognised Inspection Bodies (RIB);
 - Contracted Certification Bodies (CCB).

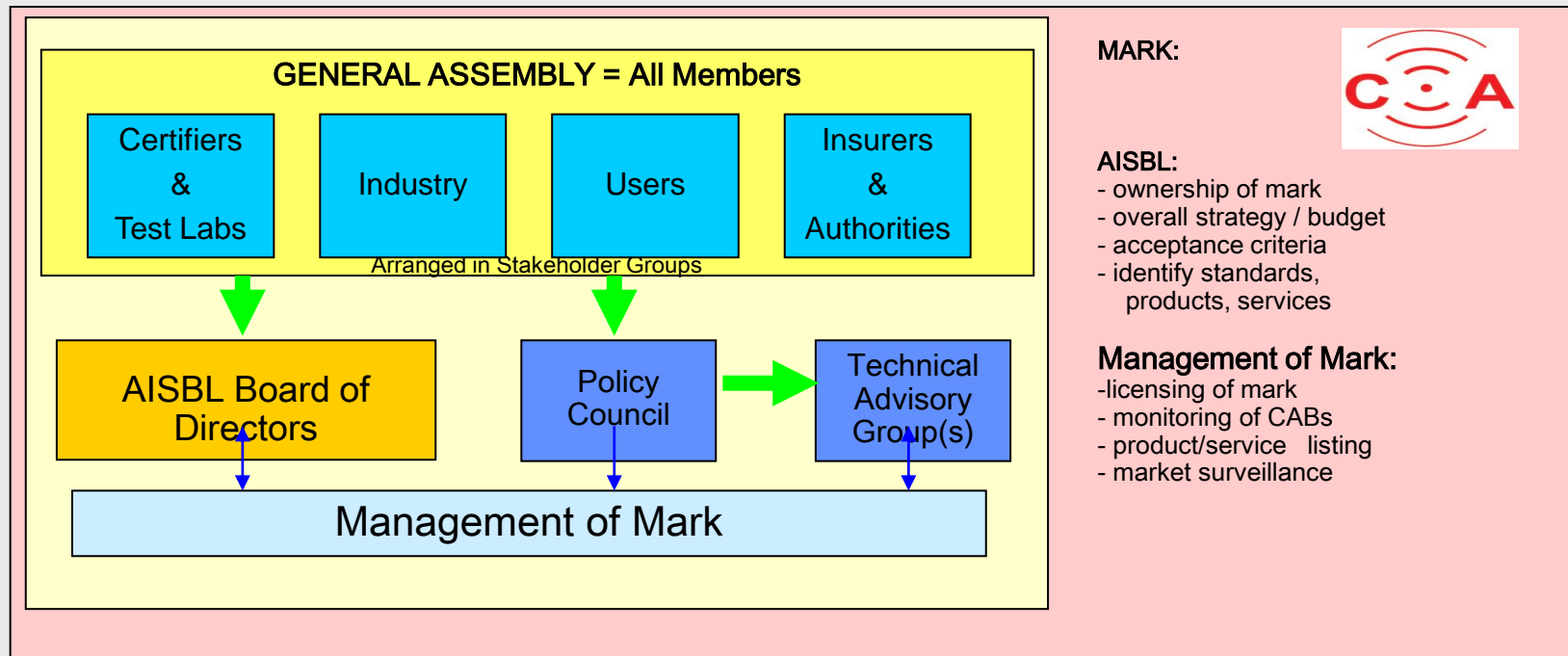
- Implying that the manufacturer can choose the RTL (for products) or RIB (for services) of his choice, while keeping the possibility to go with the conformity results to any CCB!

- The manufacturer contracts a RTL or RIB for obtaining conformity results and a CCB for obtaining a **CERTALARM** certificate and the right to use the **CERTALARM** logo.

- Brief look into the history
- Principles of CERTALARM
- Status of Certalarm**

□ Certalarm was founded in June 2009

- as Certalarm AISBL (non-profit-organisation)
- Based on the Belgium law
- Located with ist office in Brussels



❑ **Members / Stakeholder Groups:** (Status April 2010)

➤ **Industry**

- Euralarm

➤ **Test Laboratories & Certification Bodies**

- ANPI
- DNV
- Telefication

➤ **Insurers**

- Zurich Insurance

Wouter Blom	Telefication	Chair
Daniel Demuth	ANPI	
Derek Harrington	Euralarm	Finance + Sec.
Hansjürg Mahler	Euralarm	
Dominique Taudin	Euralarm	Vice Chair

CONTRACTED CERTIFICATION BODIES:

- ANPI
- DNV (t.b.c.)
- Telefication

RECOGNISED TEST LABORATORIES:

- ANPI
- DNV (t.b.c.);
- Kriwan Testlabor (t.b.c.)
- Telefication

- Fees** for Members, Manufacturers and Labels

- Income** out of (Label) Fees

- Costs** of Operations, Management & Marketing

- Cash Flow** and Profit & Loss Results.

Membership Fee

- € 900 yearly per Member.

Registration Fee

- € 3000 once per Manufacturer (per legal entity).

Label Fee

- € 400 yearly per Certificate;
- € 100 per Certificate in 1st year (transfers excluded).

Categories of countries in Roll Out Plan:

- **Category 1:** Countries that do not have a national scheme at the moment (like UK for security);
- **Category 2:** Countries that have a national scheme in place based on European standards (like DK, SF, N, NL for security);
- **Category 3:** Countries that have a national scheme in place based on national standards (like F, D, B).

CERTALARM is able to fill in the gap for countries in category 1 and has to promote that actively before local initiatives are born.

Obtaining acceptance of the Mark in countries in category 2 will probably be a matter of just asking for recognition.

Getting acceptance of the Mark in at least one country of category 3 will be crucial for the manufacturers to rally solidly behind **CERTALARM**.

Acceptance of Mark

euralarm



Recognition of **CERTALARM** at start

- Organisation and subcontractors in place
- Website operational (www.certalarm.org)
- On line database in last test phase
- First registrations of manufacturers are paid
- Applications for certificates are under process
- Ongoing discussions :
 - with additional members
 - with additional partners
 - about the acceptance of the Mark in several countries
-

Example of a Certificate

euralarm



CERTALARM -
the Quality Mark
for Fire
& Security

Registered in Brussels: CERTALARM AISBL, 1080 Brussels, Boulevard Edmond Machtens 180

CERTIFICATE

N° 000 011 /01

In accordance with the CERTALARM Rules, we certify that the product

SURVEYOR 2 Series

is in conformity with the following standard(s)

EN 50131-3:2009

**Control and indicating equipment
Security Grade 2, Environmental class II**

EN 50131-6:2008

Power supply equipment

See Annex 2

EN 50136-1-3:1998

Digital communicators using PSTN

See Annex 3

ALARMEVERYWHERE Ltd.

Newton Industrial Estate, 40 777 LONDON

is authorised to use the CERTALARM Mark on the above mentioned product.

This certificate is valid until:

3 MAY 2014

Signed on behalf of the CertAlarm Contracted Certification Body, registered in Oslo
3 May 2010



Helle Björk
Certification Division Director



Page 1/4

www.certalarm.org

This certificate and the annex may only be copied completely and without any additions.

The Board of Directors has decided in their meeting of the 5th of May 2010 that the official date of the start of operations will be:

17 May 2010

The Study on the Competitiveness of the EU security industry:

http://ec.europa.eu/enterprise/newsroom/cf/document.cfm?action=display&doc_id=5579&userservice_id=1&request.id=0

The ESRIF Final report:

http://www.esrif.eu/documents/esrif_final_report.pdf

CERTALARM:

<http://www.certalarm.org>

EA – European Co-operation for Accreditation

<http://www.european-accreditation.org>

Thank you !